

Table of Contents

File and Metal Cabinets - Wall Mount	2
File and Metal Cabinets Internal and Gang Mount	3
File Cabinets -On Modular Partition Wall	4
Storage Areas	5
Self Restraints	6
Kitchen Areas - Break Rooms	8
Flat Screen Televisions	9
Computers - Office Equipment	10
Wall Units - Executive Office Furniture	11
Wall Hangings - Objects	12
UCSD Shake Table	13 - 16

QuakeHold! Industrial
1150 Simpson Way
Escondido, CA 92029
800 959 4053



File and Metal Cabinets

Wall Mount Solution

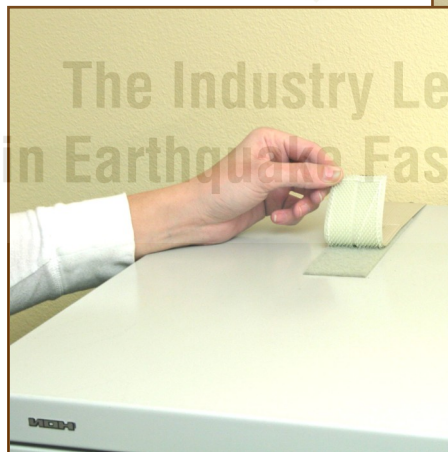
NO HOLES IN FURNITURE!

Secure top-heavy office file and metal cabinets from falling over. Prevent scattered documents and potential injury to employees.

Extra wide, flat, flexible mount straps provide a heavy-duty grip. Straps attach to wall studs and top of furniture with Velcro® Industrial Hook and Loop. Furniture is easy to access for cleaning and servicing. Replacement adhesive pads extend life of product.



INDUSTRIAL



800 959 4053
3 Offices to Serve you!



Internal and Gang Cabinets

Internal Mount is secured at top and bottom of metal file cabinet into metal wall stud.

Optional Securing Method
Floor mount in two locations inside of cabinet using Hilti floor anchors.

Gang File Strap
Flexible-mount nylon strap using industrial Velcro Industrial Hook and Loop fastener with industrial adhesive.

Optional Securing Method
Internal bolt system at top and bottom of cabinet to create invisible security.



800 959 4053
3 Offices to Serve you!



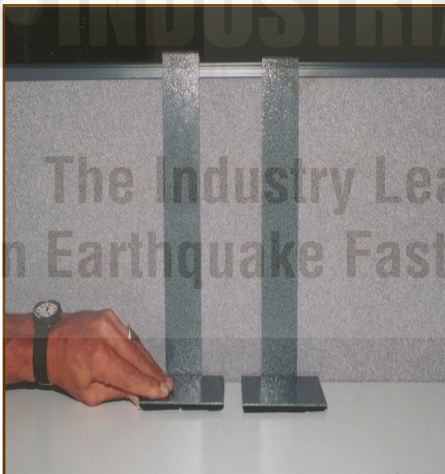
FILE CABINETS SECURED TO MODULAR PARTITION WALL

U-brace slides over top of partition.



Adhesive plate inserts through U-brace and slides down into position

Powder coated to match decor.



Close up of adhesive plate

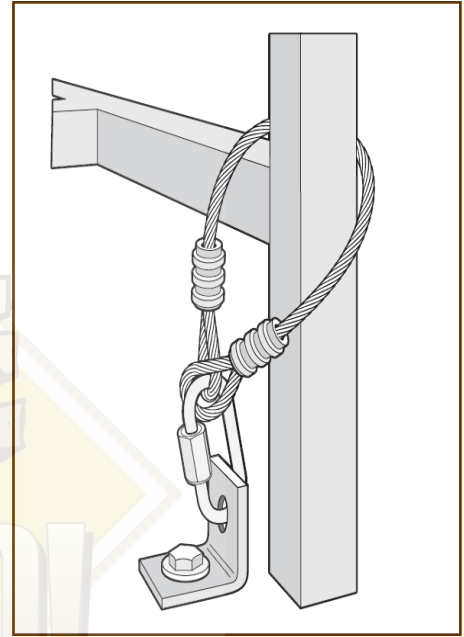
800 959 4053
3 Offices to Serve you!



STORAGE AREAS

Storage rack floor braced.

Quick-link for easy disconnect.



Metro and storage racks combine D-ring adjustability and quick-disconnect for wall-mount bracing.



SHELF RESTRAINTS

OPTION 1
Single Quick Disconnect Buckles with Nylon Strapping. Allows Full Shelf Access.



OPTION 2
Stretchable Shock Cord Custom length with end-cap connectors.



OPTION 3
Double Quick Disconnect Buckles with Netting. Allows Full Shelf Access.



OPTION 4
Book-Keeper Bar that Lifts and Releases

OPTION 5
Stretchable Shock Cord Pull Down Access with See Through Net

800 959 4053
 3 Offices to Serve you!



Kitchen Areas - Break Rooms

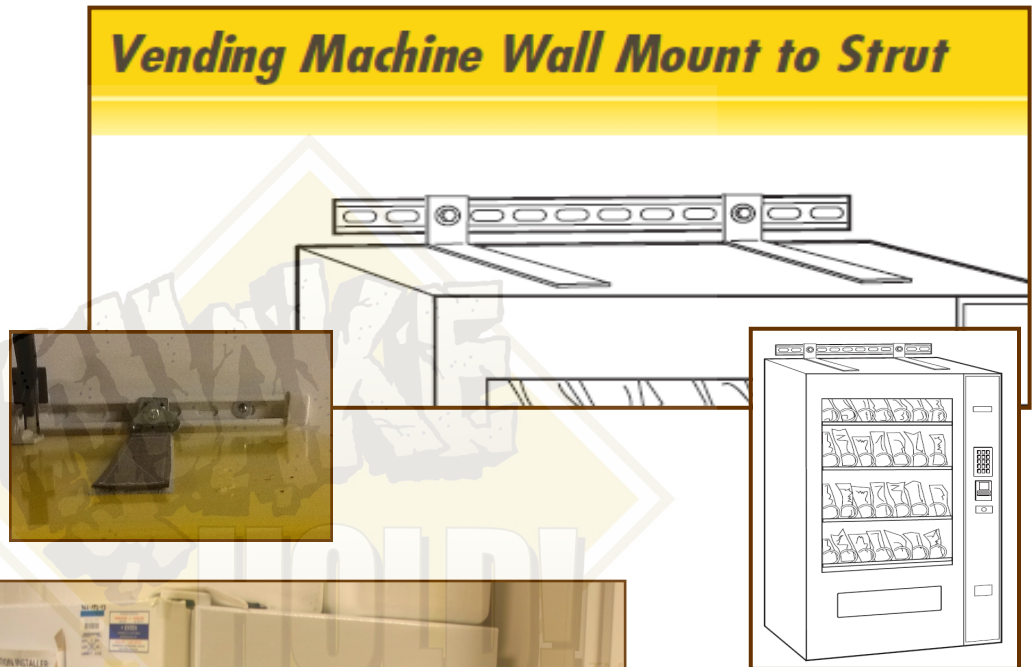
Vending machines are secured to a Strut-Wall System using extra-wide flexible-mount nylon straps.

Features:
 No holes into vending equipment.
 Quick disconnect for ease of servicing and cleaning.

Break Room refrigerator secured with color matching strap with quick-disconnect buckle.

Strap secures to wall stud.

Vending Machine Wall Mount to Strut



800 959 4053
 3 Offices to Serve you!



Flat Screen Televisions

**Prevent
Televisions
from Turning
into Dangerous
Projectiles**

**Prevent
Damage,
Injury or
Electrical Fires.**

**VARIOUS SIZE
STRAPS
AVAILABLE:**

40" - 70"
Universal Flat or
Big Screen for
various weights

Quick Disconnect
Buckle allows
equipment
to be removed
for servicing.

Non-damaging
3M® adhesive
attaches to table.



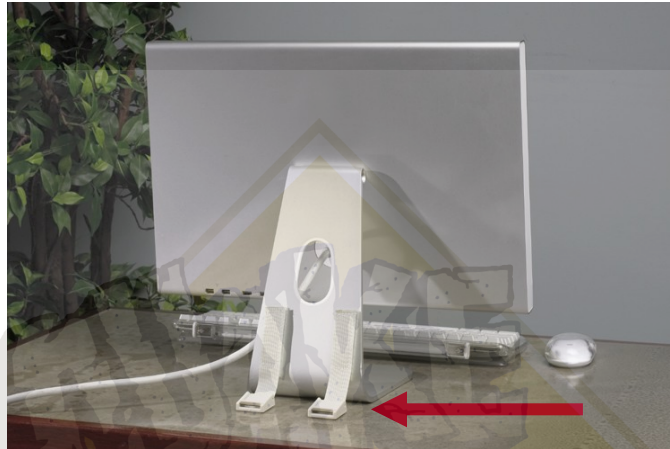
The Industry Leader
in Earthquake Fastening.

800 959 4053
3 Offices to Serve you!

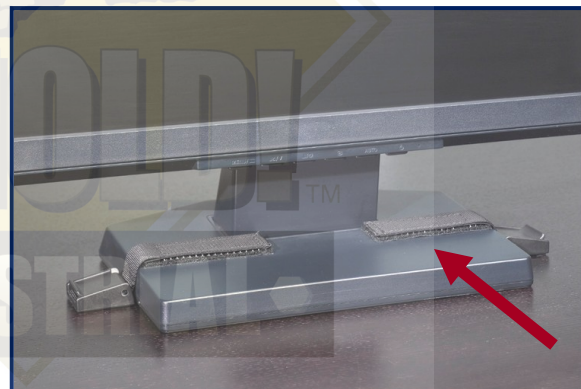


Computers - Office Equipment

Computer Monitors: Peel and press in place.



Easy to use and remove.
Matching colors



Fax and Medium Size Office Machines: Two-point fastening.

Matching colors



800 959 4053
3 Offices to Serve you!



Wall Units - Executive Furniture

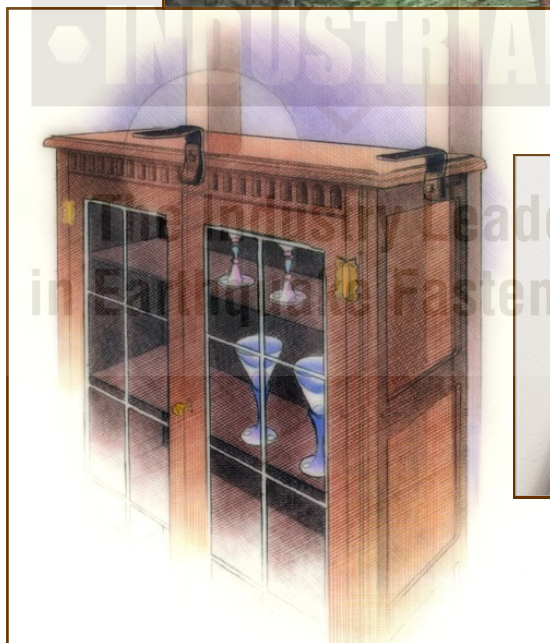
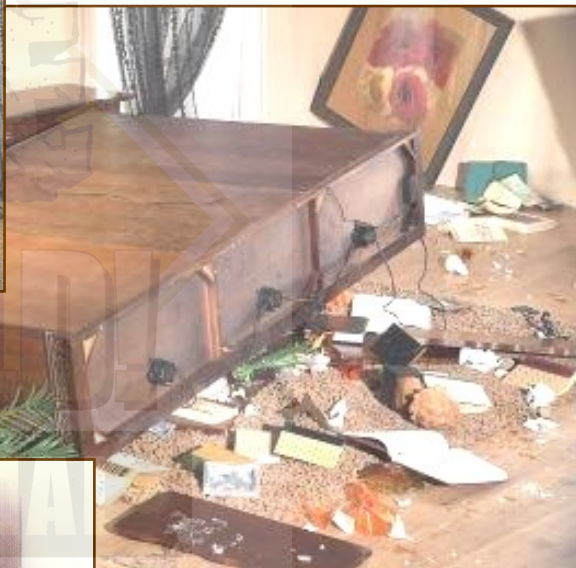
NO HOLES IN FURNITURE!

5 colors allow straps to match furniture decor

State-of-the-art flexible mount straps are attached to wall stud and at two points on furniture using Velcro® Industrial Hook and Loop.

This method allows furniture its own independent movement while securely attached to wall studs.

**See USGS
"Putting Down
Roots – Step 1"**



800 959 4053
3 Offices to Serve you!



Wall Hangings - Objects

A-maze-ing Picture Hook

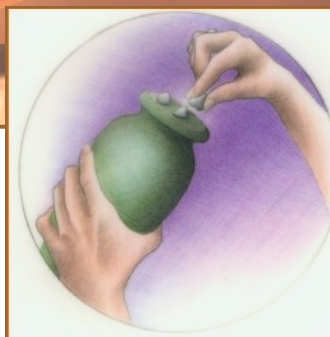
Heavy mirrors and wall art in hallways can block exit routes and pose a danger.

This is a closed hook solution and traps the wire in a maze.



Award Winning Adhesives

Museum quality removable, re-usable adhesives (putty, microcrystalline wax and gels) secure tabletop office items and decorative objects from turning into dangerous projectiles.



UCSD Shake Table



QuakeHold! was selected to participate in the World's largest shake table experiment constructed to improve all components of hospital and laboratory safety during and after an earthquake. We were responsible for populating the building with upright freezers, deli coolers, refrigerators, upright hoods, countertop equipment and also furnish a lifestyle living room with household furnishings. **QuakeHold!** fastened many of the items with our OSHPD systems as well as our other non OSHPD methods for countertop or wall mounting. The seismic shaking was rated at up to a 200 year event with severe shaking in excess of two minutes. All fastened items performed above our expectations and we experienced no failures. Those items that were left unsecured toppled over and were destroyed in the shaking.

Elevators, stairwells, structural columns and large sections of sheet rock were destroyed in the shaking. We learned many valuable lessons that will make the hospitals of the future safer for all.

To view our YouTube footage of the simulations go to www.quakeholdindustrial.com and click on the UCSD shake table.



800 959 4053
3 Offices to Serve you!



UCSD Shake Table

SET UP FOR TESTING

(300+ Cameras, Seismic Sensors, GPS Monitoring, Physical Inspections and Documentation After Each Event, Mercalli Intensity Scale, 5 Shake Scenarios Conducted)

- Bookcases
- File Cabinets
- Countertop Lab Equipment
- TV's
- Refrigerator
- Wall Mounted Shelving
- Decorative Wall Art
- Other Household and Office Items
- Minus 80 Freezers
- Deli Cooler
- Centrifuges
- Metro Racks
- Flam Cabinet
- Laboratory Items



800 959 4053
3 Offices to Serve you!



UCSD Shake Table

MULTIPLE SHAKE EVENTS

Live Earthquake Simulation Demonstrates That Secured items Survived Intact and Unsecured items Topped.



Watch Progression of Unsecured Items Toppling



Items Secured with QuakeHold! Industrial Products withstand Severe Shaking!

Actual Screenshots of the Footage Seen Here:

www.quakeholdindustrial.com

Click on the UCSD Shake Table.

800 959 4053
3 Offices to Serve you!



UCSD Shake Table

MULTIPLE SHAKE EVENTS

5 Story Building Experienced Severe Damage

Uninhabitable Red Tagged

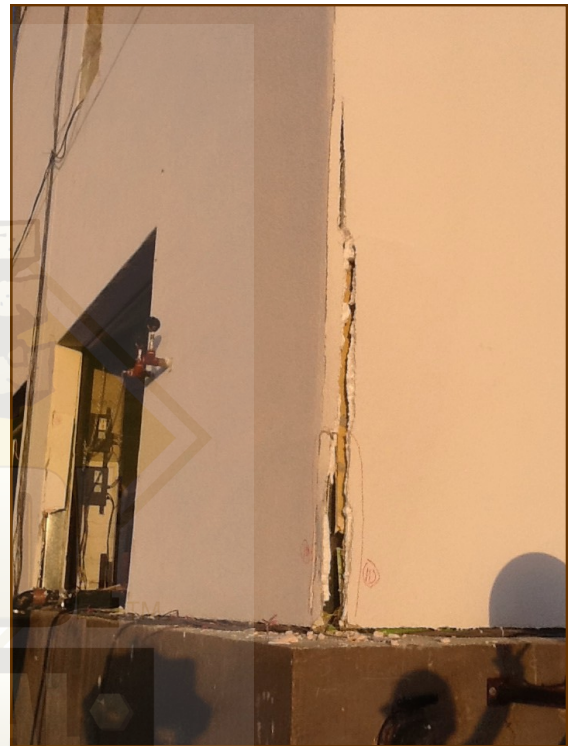
QUAKEHOLD PREVAILED!

Without Our Mitigation Techniques and Fastening Solutions, Items Topped and Broke.

Elevator Door Askew



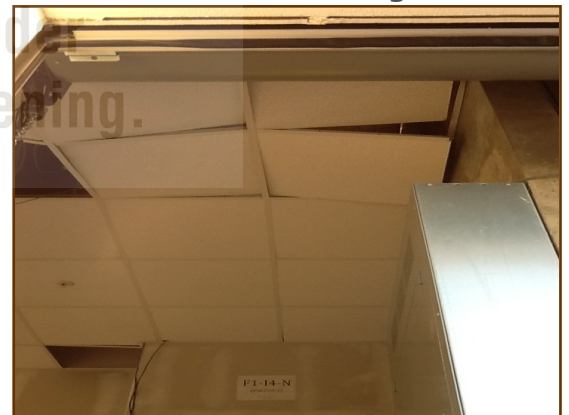
1st Flr Structural Damage



Inspectors Assess Damage



T-Bar Ceiling Severe Damage



Topped TV and Other Objects



800 959 4053
3 Offices to Serve you!

